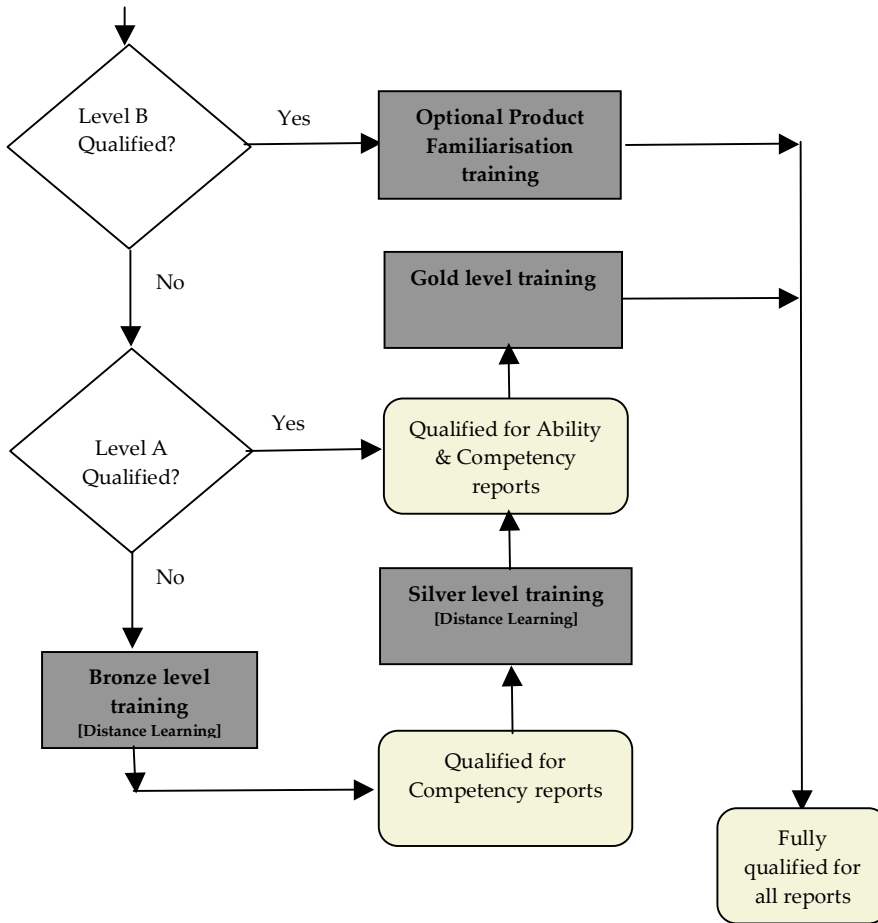


The use of psychometric materials is restricted to those people who have received appropriate training.



We provide 3 levels of training: -

Course	For	Form
<b>Bronze</b>	Those who wish to use our internet delivered competency reports in a selection or counselling context.	Distance learning materials.
<b>Silver</b>	Those who wish to administer and interpret our Ability materials in a selection or counselling context.	Distance learning materials and post course work.
<b>Gold</b>	Those who wish to use all of our materials including full psychometric reports and have an understanding of multi-cultural issues.	Pre-course work, 2 days class work and post course work.

We recognise B.P.S. & A.P.A. qualifications and equivalent from appropriate organisations worldwide.

We also provide training to individuals and organisations.

All users of our materials are required to affirm that they will abide by our code of ethics in their use of our Psychometric materials.

For further details please contact:  
Dr Colin Selby,  
Selby & Mills Limited  
Prospect House, Prospect Place  
Beechen Cliff  
BATH BA2 4QP

Telephone: - +44 (0)1225 311399  
Email: [colin@selbymills.co.uk](mailto:colin@selbymills.co.uk)

The qualification that you need in order to use our questionnaires is as follows: -

Questionnaire	Reports	Qualification required
<b>Ability tests</b>	Assessment	Silver or Level A
<b>Assessor</b>	Careers Advice	None
	Competencies	Bronze or Level A
	Psychometric	Gold or Level B
<b>Employment</b>	Assessment	Bronze or Level A
<b>Entrepreneur</b>	Feedback	None
	Counsellors	None
<b>Management Potential</b>	Feedback	None

[Revised 7<sup>th</sup> September 2010]